

# OHMM<sup>®</sup>

## COLLECTIONS 2020

SINGAPORE RETAIL PRICING 2020  
INC GST



# COLLECTIONS

---

BARCELONA 3

BEACH 4

CABANA 5 **NEW**

CALA 6

CALA MINI 7 **NEW**

CATALONIA 8 **NEW**

CIRCULO 9

CLASSIC 10 **NEW ITEMS**

CLOUD 9 11

ECLIPSE 12

FIESTA 13

FLO 14 - 15

HALF MOON 16

HAVANA 17 **NEW**

HORIZON 18 - 20 **NEW ITEMS**

HORIZON MINI 21 - 22 **NEW**

INTI 23

KEYWEST 24 - 25

KYOTO 26

LATITUDES 27 - 28

LINEAR 29

MANTRA 30 - 31

MAXIMUS 32 - 34 **NEW ITEMS**

MODULO 35 - 37

NEST 38

NOVO 39 **NEW ITEMS**

PALM 40 - 43 **NEW ITEMS**

PARTU 44 - 45 **NEW ITEMS**

SOL 46

SUMMER LIGHT 47 - 48

TAMARU 49

TRES 50

WAVE 51

ZEN 52 - 53 **NEW ITEMS**

## OHMM ACCESSORIES

---

PARASOLS 54 - 55

LANTERNS 56 **NEW**

PLANTERS 57

SIDE TABLES 58

FURNITURE COVERS 59 **NEW**

ACCENT CUSHIONS 60 - 61

## OHMM INFO SHEETS

---

FIBRE & POWDER

COATINGS 62 - 65

CUSHIONS & FABRICS 66 - 67

TABLE TOPS 68

ICONS & OPTIONAL

DESIGN FEATURES 69

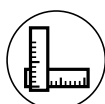
HANDCRAFTED QUALITY 70

REASONS TO CHOOSE OHMM 71

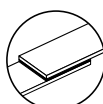
WARRANTY 71

## ICONS & OPTIONAL DESIGN FEATURES

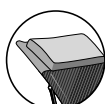
---



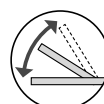
Custom Sizing



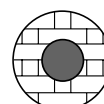
Optional Cushion Straps



Optional Sun Lounger Headrests



Adjustable Backrests



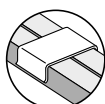
Optional Parasol Hole



Protective Footrests



Adjustable Gliders



Modular Clips

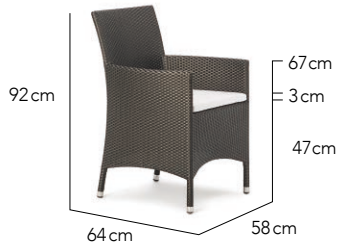


Optional Covers

# BARCELONA

SGD

Arm Chair



**\$468**  
Cushion **\$117**  
Total **\$585**



**\$722**  
Cushion **\$211**  
Total **\$933**



2 Seater Arm Chair



## RECOMMENDED FINISHING PAIRINGS



Chalk



Granite



Bronze



Natural

# BEACH

SGD

Arm Chair



**\$395**  
Cushion \$104  
Total \$499



**\$630**  
Glass \$113  
Total \$743



Bistro Table



## RECOMMENDED FINISHING PAIRINGS



Chalk



Natural



Natural



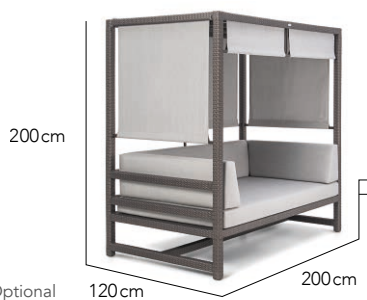
Natural



# CABANA

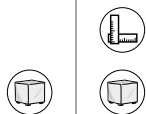
SGD

Day Bed

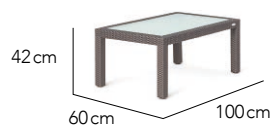


Side Canopies Optional

\$8,841 \$722



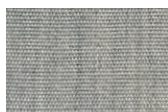
Coffee Table



## RECOMMENDED FINISHING PAIRINGS



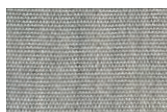
Chalk



Granite



Bronze



Granite

# CALA

SGD

Lounge Chair



\$1,302 \$2,048



Lounge Chair XL



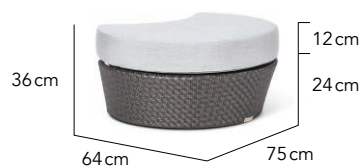
2 Seater Sofa



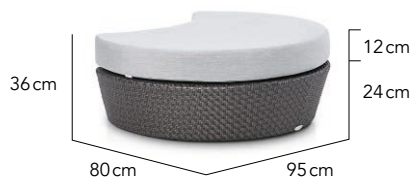
\$2,664 \$847



Foot Stool / Ottoman



Foot Stool / Ottoman XL



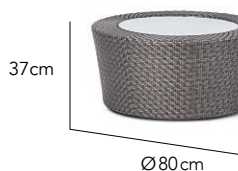
\$1,131 \$443



Side Table



Coffee Table



\$552 \$746



Oval Coffee Table



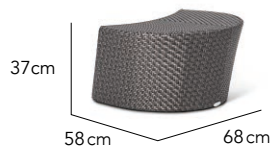
Day Bed



\$3,651 \$372  
Glass \$146  
Total \$518



Day Bed Side Table



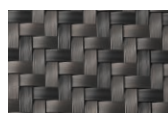
## RECOMMENDED FINISHING PAIRINGS



Chalk



Granite



Titanium



Granite

# CALA MINI

SGD

Lounge Chair

\$1,094 \$2,249

2 Seater Sofa

IMAGE COMING SOON  
D78 X W83 X H72CM

IMAGE COMING SOON  
D78 X W163 X H72CM

Foot Stool / Ottoman  
Half Moon

\$618 \$617

Foot Stool / Ottoman  
Round

IMAGE COMING SOON  
D50 X W63 X H24CM

IMAGE COMING SOON  
Ø50 X H24CM

Side Table Round

\$441 \$551

Coffee Table Round

IMAGE COMING SOON  
Ø50 X H45CM

IMAGE COMING SOON  
Ø70 X H37CM

Coffee Table Oval

\$746

IMAGE COMING SOON  
L100 X W70 X H37CM

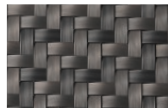
## RECOMMENDED FINISHING PAIRINGS



Chalk



Granite



Titanium



Granite

# CATALONIA

SGD

Side Chair



**\$422**  
Cushion **\$117**  
Total **\$539**



**\$447**  
Cushion **\$117**  
Total **\$564**



Arm Chair



Dining Table



**\$947**  
Glass **\$163**  
Total **\$1,110**



**\$1,060**  
Glass **\$182**  
Total **\$1,242**



Dining Table



Dining Table



**\$1,313**  
Glass **\$341**  
Total **\$1,654**



## RECOMMENDED FINISHING PAIRINGS



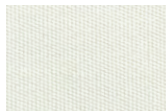
Chalk



Granite



Titanium



Natural



# CIRCULO

SGD

Day Bed L



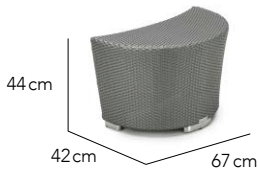
\$4,867 \$2,708



Day Bed S



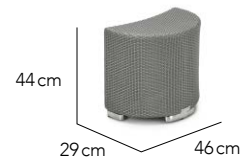
Half Moon Side Table L



\$362 \$285  
 Glass \$146 Glass \$146  
 Total \$508 Total \$431



Half Moon Side Table S



## PREFERRED FINISHING PAIRINGS



Chalk



Granite



Platinum

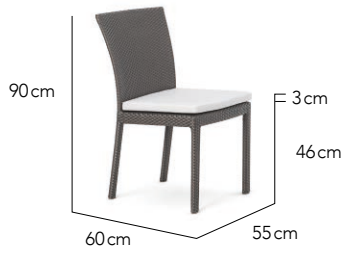


Granite

# CLASSIC

SGD

Side Chair



**\$336**  
Cushion \$109  
Total \$445



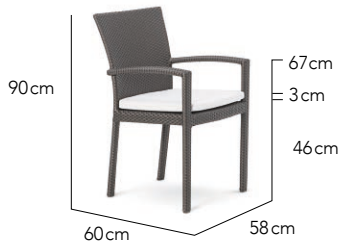
**\$336**



Side Chair  
(Non Cushion Version)



Arm Chair



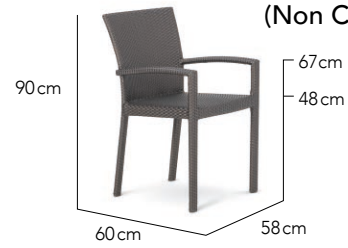
**\$402**  
Cushion \$117  
Total \$519



**\$402**



Arm Chair  
(Non Cushion Version)



2 Seater Arm Chair



**\$586**  
Cushion \$211  
Total \$797



**\$1,055**  
Cushion w Headrest \$670  
Cushion w/o Headrest \$586  
Headrest w Sleeve \$126



Sun Lounger  
(Cushion Optional)



Sun Lounger



**\$1,055**



**\$251**



Sun Lounger Side Table



## RECOMMENDED FINISHING PAIRINGS



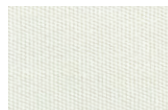
Chalk



Granite



Brass



Natural

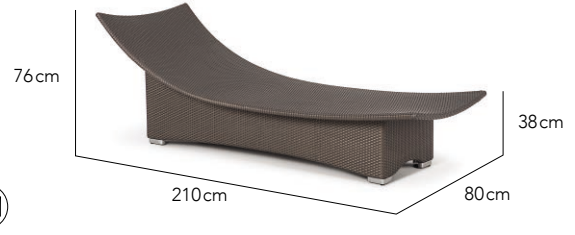
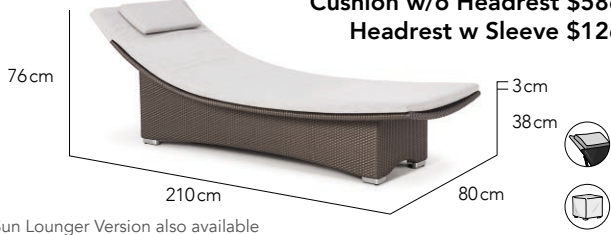
# CLOUD 9

SGD

## Sun Lounger (Cushion Optional)

\$1,539 \$1,539

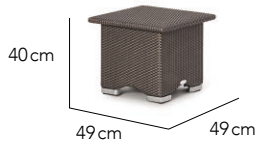
Cushion w Headrest \$670  
Cushion w/o Headrest \$586  
Headrest w Sleeve \$126



## Sun Lounger

## Sun Lounger Side Table

\$407



## PREFERRED FINISHING PAIRINGS



Chalk



Granite



Titanium



Granite

# ECLIPSE

SGD

## Sun Lounger (Cushion Optional)

**\$1,005** **\$1,005**

**Cushion w Headrest \$670**  
**Cushion w/o Headrest \$586**  
**Headrest w Sleeve \$126**



Higher Seat Version & Double Sun Lounger Version also available

## Sun Lounger Side Table

**\$262**



## RECOMMENDED FINISHING PAIRINGS



Chalk



Granite



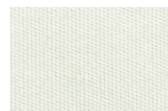
Natural



Taupe



Bronze



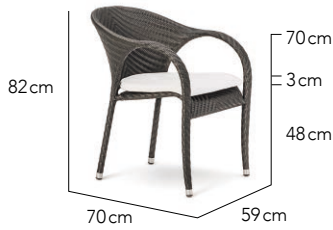
Natural



# FIESTA

SGD

Arm Chair



**\$498**  
Cushion \$126  
Total \$624



**\$821**  
Cushion \$226  
Total \$1,047



2 Seater Arm Chair



Side Table



**\$391**  
Glass \$110  
Total \$501



**\$536**  
Glass \$128  
Total \$664



Bistro Table



Dining Table



**\$609**  
Glass \$147  
Total \$756



**\$631**  
Glass \$163  
Total \$794



Dining Table



Dining Table



**\$704**  
Glass \$184  
Total \$888



**\$1,089** Sun Lounger (Cushion Optional)  
Cushion w/ Headrest \$754  
Cushion w/o Headrest \$670  
Headrest w/ Sleeve \$126



Sun Lounger



**\$1,089**



**\$267**



Sun Lounger Side Table



## RECOMMENDED FINISHING PAIRINGS



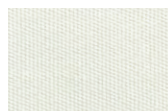
Chalk



Granite

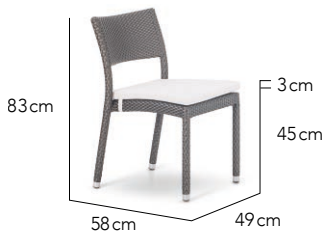


Bronze



Natural

Side Chair



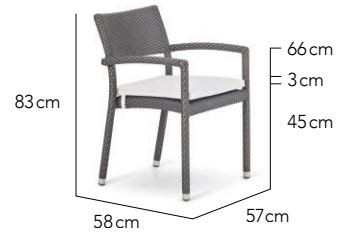
**\$318**  
Cushion \$109  
Total \$427



**\$377**  
Cushion \$117  
Total \$494



Arm Chair



Club Chair



**\$482**  
Cushion \$155  
Total \$637



**\$497**  
Glass \$128  
Total \$625



Bistro Table



Lounge Chair



**\$978** **\$1,443**



2 Seater Sofa



3 Seater Sofa



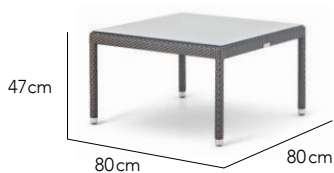
**\$1,965** **\$772**



Foot Stool



Coffee Table



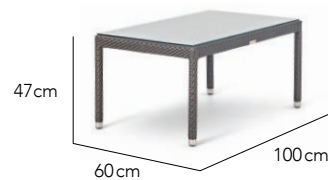
**\$410**  
Glass \$163  
Total \$573



**\$404**  
Glass \$163  
Total \$567



Coffee Table



Side Table



**\$303**  
Glass \$113  
Total \$416



**\$451**  
Cushion \$109  
Total \$560



Bar Chair



# FLO

SGD

## Sun Lounger (Cushion Optional)

**\$1,043** **\$1,043**

**Cushion w Headrest \$670**  
**Cushion w/o Headrest \$586**  
**Headrest w Sleeve \$126**



## Sun Lounger



## Sun Lounger Side Table

**\$223**



## RECOMMENDED FINISHING PAIRINGS



Chalk



Granite



Titanium



Taupe

# HALF MOON

SGD

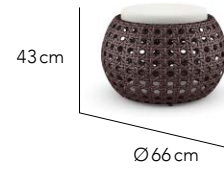
Swing Seat



\$2,913 | \$617



Ottoman



## PREFERRED FINISHING PAIRINGS



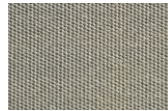
Chalk



Granite



Natural



Taupe



Carbon



Granite



# HAVANA

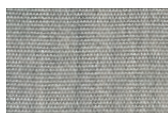
SGD

<p>Arm Chair</p> <p>\$875</p> <p>IMAGE COMING SOON D66 X W60 X H82CM</p>	<p>\$1,021</p> <p>Club Chair</p> <p>IMAGE COMING SOON D72 X W67 X H82CM</p>
<p>High Back Chair</p> <p>\$1,053</p> <p>IMAGE COMING SOON D85 X W66 X H100CM</p>	<p>\$1,389</p> <p>Lounge Chair</p> <p>IMAGE COMING SOON D83 X W75 X H82CM</p>
<p>2 Seater Sofa</p> <p>\$2,016</p> <p>IMAGE COMING SOON D83 X W136 X H82CM</p>	<p>\$2,678</p> <p>3 Seater Sofa</p> <p>IMAGE COMING SOON D83 X W196 X H82CM</p>
<p>Coffee Table Square</p> <p>\$585</p> <p>IMAGE COMING SOON L75 X W75 X H45CM</p>	<p>\$719</p> <p>Coffee Table Rectangular</p> <p>IMAGE COMING SOON L100 X W75 X H45CM</p>
<p>Side Table</p> <p>\$470</p> <p>IMAGE COMING SOON L55 X W55 X H45CM</p>	

## RECOMMENDED FINISHING PAIRINGS



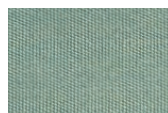
Chalk



Granite



Sand



Spa



Titanium

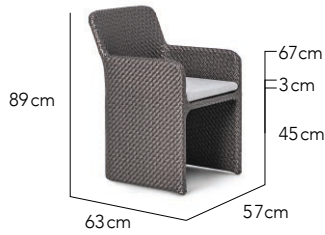


Natural

# HORIZON

SGD  
 GI = FROSTED GLASS INSERT  
 FW = FULLY WOVEN TOP  
 GLASS = CLEAR GLASS FOR FW TOP

Arm Chair



\$607  
 Cushion \$137  
 Total \$744



GI \$989  
 FW \$724  
 Glass \$182



Dining Table



Dining Table



GI \$1,090  
 FW \$790  
 Glass \$200



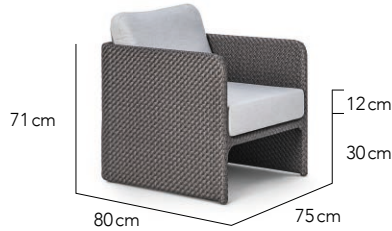
GI \$1,795  
 FW \$1,264  
 Glass \$384



Dining Table



Lounge Chair



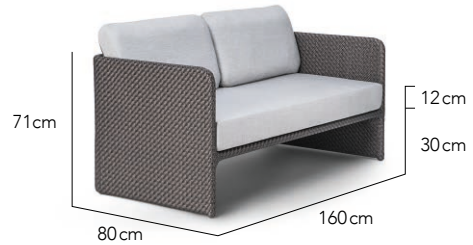
\$1,530



\$2,656



2 Seater Sofa



3 Seater Sofa



\$3,400



\$1,638



Corner Module



Left Module S



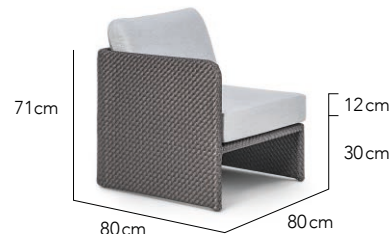
\$1,370



\$1,370



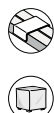
Right Module S



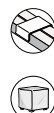
Left Module L



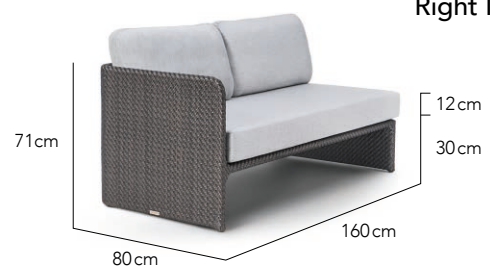
\$2,498



\$2,498



Right Module L



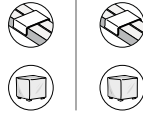
# HORIZON

SGD

Centre Module S



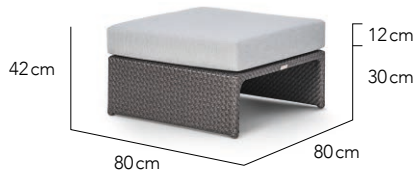
\$1,335 \$2,343



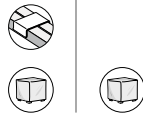
Centre Module L



Backless Module S / Ottoman



\$1,002 \$2,294



Chaise Longue L



Chaise Longue R



\$2,294 \$3,679



Day Bed S



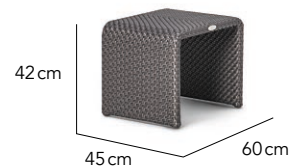
Day Bed L



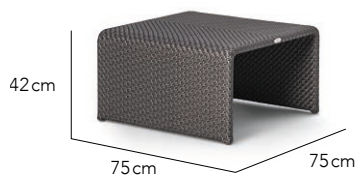
\$4,642 \$427



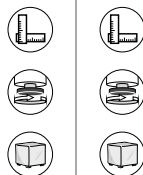
Side Table



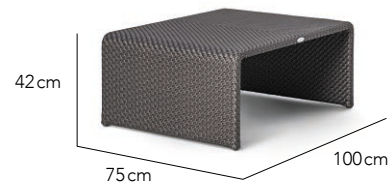
Coffee Table



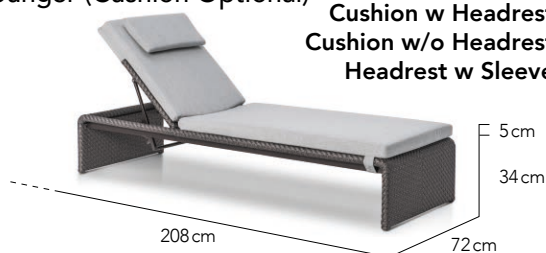
\$538 \$638



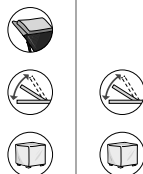
Coffee Table



Sun Lounger (Cushion Optional)



\$1,564 \$1,564



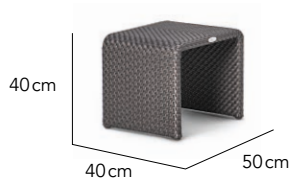
Cushion w Headrest \$670  
Cushion w/o Headrest \$586  
Headrest w Sleeve \$126

Sun Lounger



Sun Lounger Side Table

\$391



## RECOMMENDED FINISHING PAIRINGS



Chalk



Granite



Titanium



Granite

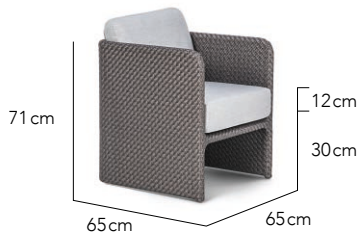


# HORIZON MINI

SGD

Lounge Chair

\$1,216 \$1,714



2 Seater Sofa



3 Seater Sofa

\$2,319 \$1,365



Corner Module

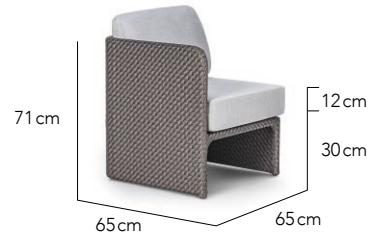


Left Module S

\$1,095 \$1,095



Right Module S



Left Module L

\$1,617 \$1,617



Right Module L



Centre Module S

\$1,042 \$1,544

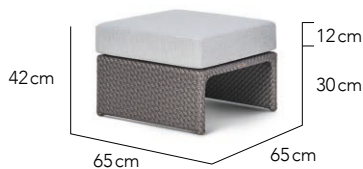


Centre Module L

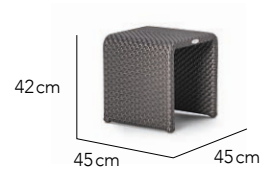


Backless Module S / Ottoman

\$773 \$356



Side Table



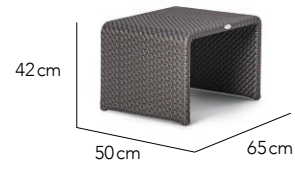
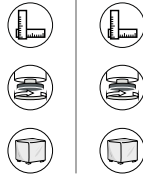
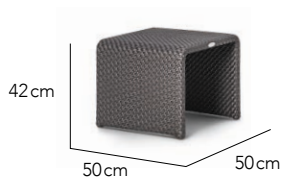
# HORIZON MINI

SGD

Coffee Table

\$351 | \$405

Coffee Table



## RECOMMENDED FINISHING PAIRINGS



Chalk



Granite



Titanium



Granite

# INTI

SGD

## Sun Lounger (Cushion Optional)

\$837

\$837

## Sun Lounger



Cushion w Headrest \$590  
Cushion w/o Headrest \$516  
Headrest w Sleeve \$111



## Sun Lounger Side Table

\$263



## RECOMMENDED FINISHING PAIRINGS



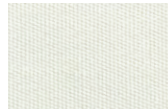
Chalk



Granite



Natural



Natural



Titanium



Granite

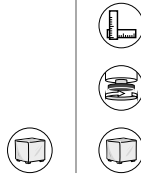
# KEYWEST

SGD

Arm Chair



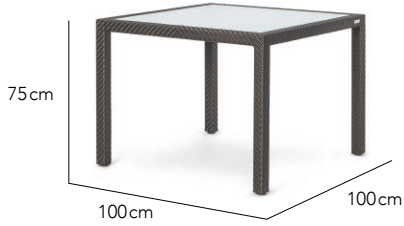
**\$510**  
Cushion **\$137**  
Total **\$647**



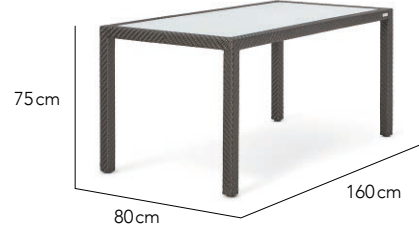
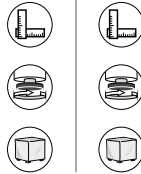
Dining Table



Dining Table

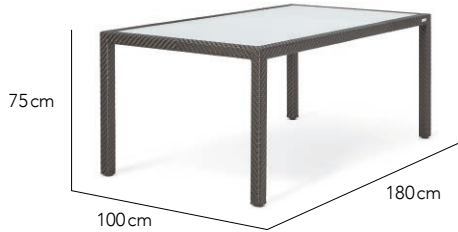


**\$1,090** **\$1,561**

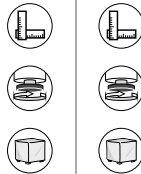


Dining Table

Dining Table



**\$1,795** **\$1,909**



Dining Table

Lounge Chair



**\$1,187** **\$1,754**



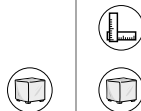
2 Seater Sofa



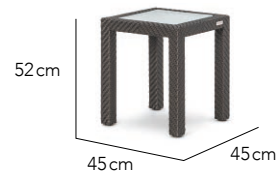
3 Seater Sofa



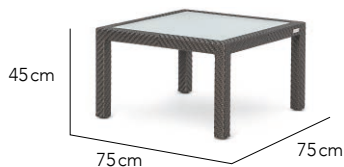
**\$2,284** **\$457**



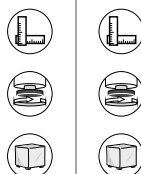
Side Table



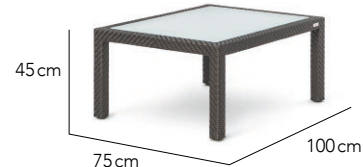
Coffee Table



**\$719** **\$866**



Coffee Table



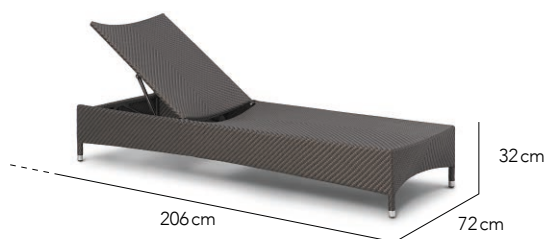
# KEYWEST

SGD

Sun Lounger (Cushion Optional)

\$1,089

Cushion w Headrest \$670  
Cushion w/o Headrest \$586  
Headrest w Sleeve \$126



Sun Lounger

\$1,089

Sun Lounger Side Table

\$234



## RECOMMENDED FINISHING PAIRINGS



Chalk



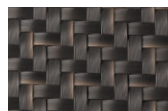
Granite



Sand



Natural



Java



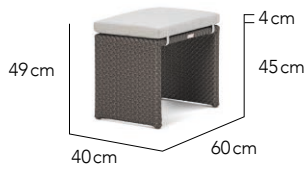
Natural



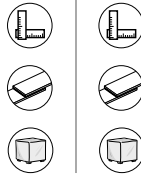
# KYOTO

SGD

Stool

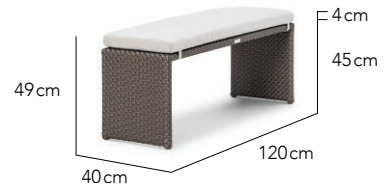


**\$333**  
Cushion **\$134**  
Total **\$467**

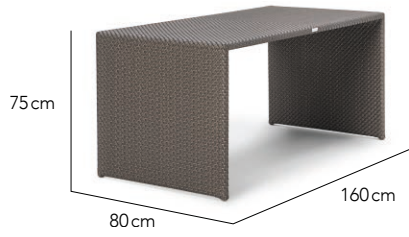


**\$437**  
Cushion **\$208**  
Total **\$645**

Bench



Table



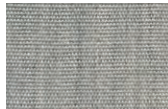
**\$1,229**  
Glass **\$252**  
Total **\$1,481**



## RECOMMENDED FINISHING PAIRINGS



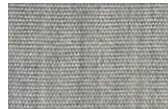
Chalk



Granite



Titanium



Granite

# LATITUDES

SGD

Arm Chair



\$552



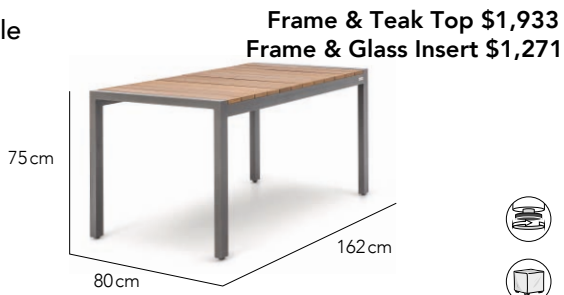
Frame & Teak Top \$1,246  
Frame & Glass Insert \$959



Dining Table



Dining Table



Frame & Teak Top \$1,933  
Frame & Glass Insert \$1,271



Frame & Teak Top \$2,328  
Frame & Glass Insert \$1,506



Dining Table



Lounge Chair



\$1,234



\$1,984



2 Seater Sofa



3 Seater Sofa



\$2,783



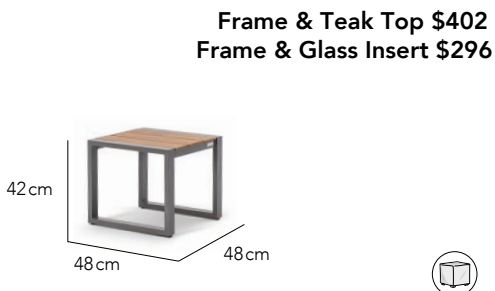
\$912



Ottoman / Foot Stool



Side Table



Frame & Teak Top \$402  
Frame & Glass Insert \$296



Frame & Teak Top \$788  
Frame & Glass Insert \$451



Coffee Table



Coffee Table



Frame & Teak Top \$977  
Frame & Glass Insert \$556



\$1,338



Optional Lounge Back Cushion  
Angular Style

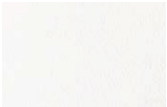


# LATITUDES

---

## RECOMMENDED FINISHING PAIRINGS

---



White



Granite



Taupe



Granite

# LINEAR

SGD

Stool



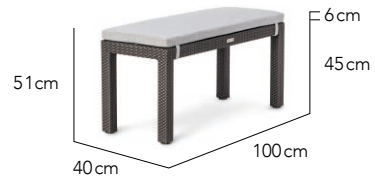
**\$353**  
Cushion \$134  
Total \$487



**\$541**  
Cushion \$174  
Total \$715



Bench Medium



Bench Large



**\$642**  
Cushion \$208  
Total \$850



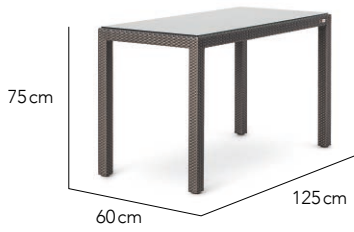
**\$684**  
Glass \$163  
Total \$847



Table Small



Table Medium



**\$864**  
Glass \$183  
Total \$1,047



**\$1,049**  
Glass \$255  
Total \$1,304



Table Large



## RECOMMENDED FINISHING PAIRINGS



Chalk



Granite



Titanium

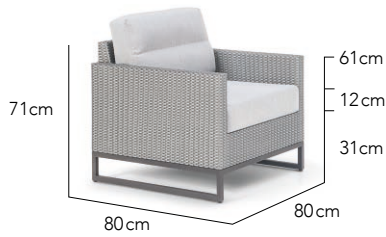


Natural

# MANTRA

SGD

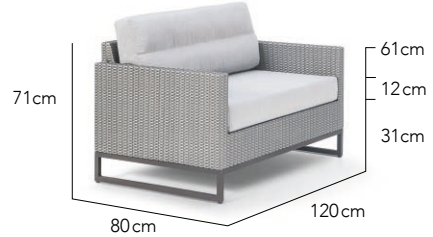
Lounge Chair



\$1,641 \$2,445



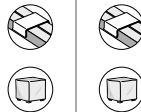
2 Seater Sofa



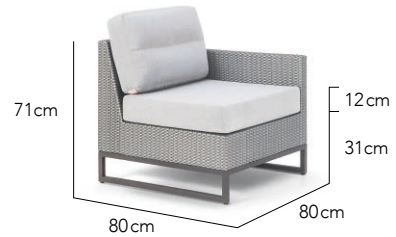
Corner Module



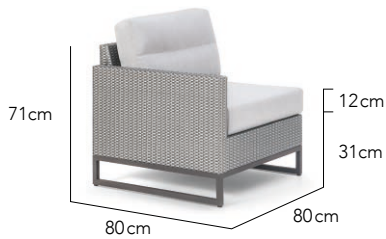
\$1,733 \$1,733



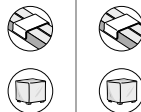
Left Module S



Right Module S



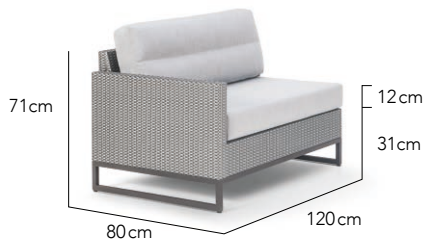
\$1,733 \$2,272



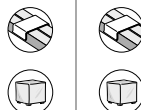
Left Module L



Right Module L



\$2,272 \$1,551



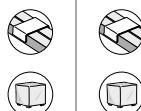
Centre Module S



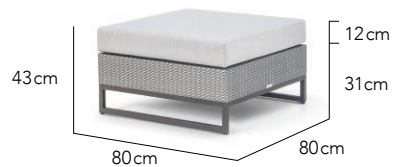
Centre Module L



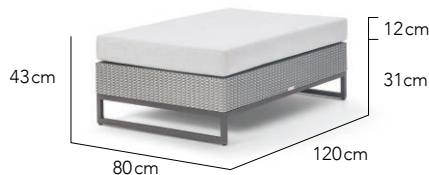
\$1,954 \$1,309



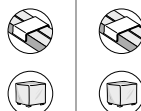
Backless Module / Ottoman S



Backless Module / Ottoman L



\$1,590 \$3,042



Chaise Longue L



# MANTRA

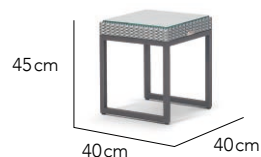
SGD

Chaise Longue R

\$3,042

\$432  
Glass \$84  
Total \$516

Side Table

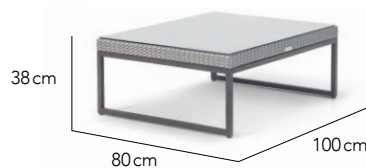
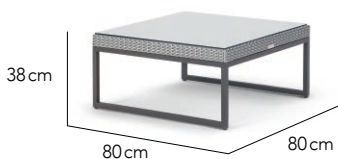


Coffee Table

\$661  
Glass \$163  
Total \$824

\$772  
Glass \$188  
Total \$960

Coffee Table



## RECOMMENDED FINISHING PAIRING

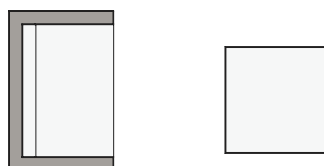
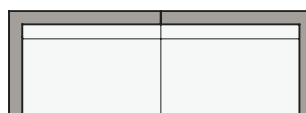
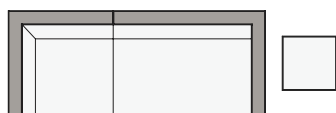
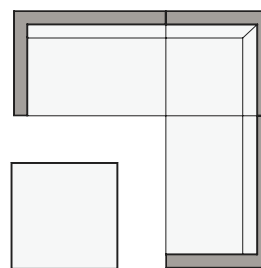
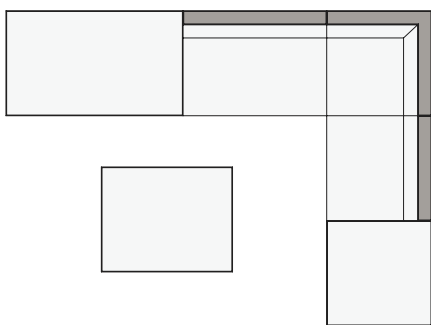


Platinum & Silver



Granite

## SAMPLE CONFIGURATIONS





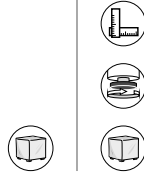
# MAXIMUS

SGD

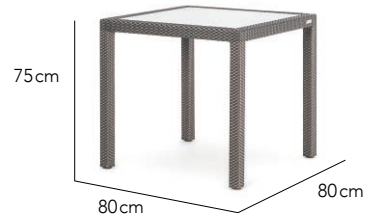
Arm Chair



**\$608**  
Cushion **\$137**  
Total **\$745**

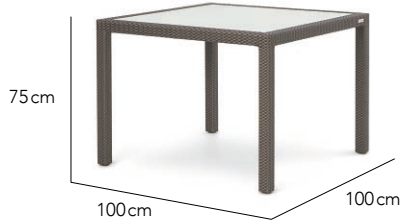


**\$841**



Dining Table

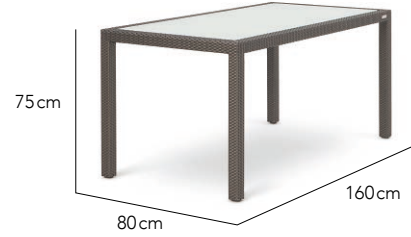
Dining Table



**\$1,050**



**\$1,500**



Dining Table

Dining Table



**\$1,842**



**\$1,263**



Lounge Chair

2 Seater Sofa



**\$1,765**



**\$2,457**



3 Seater Sofa

Corner Module



**\$1,525**



**\$1,721**



Left Module

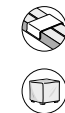
Right Module



**\$1,721**



**\$1,170**



Centre Module S

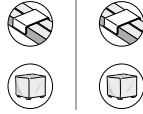
# MAXIMUS

SGD

Centre Module L



\$1,659 \$840



Backless Module / Ottoman



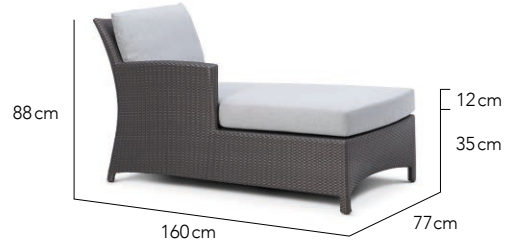
Chaise Longue L



\$1,767 \$1,767



Chaise Longue R



Foot Stool



\$764 \$446



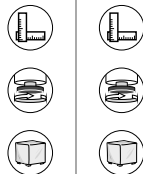
Side Table



Coffee Table



\$699 \$783



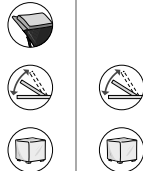
Coffee Table



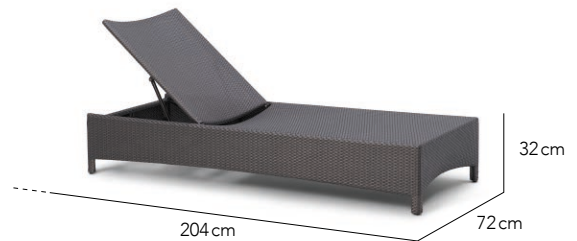
Sun Lounger (Cushion Optional)



\$1,089 \$1,089



Sun Lounger



Sun Lounger Side Table

\$243



# MAXIMUS

---

## RECOMMENDED FINISHING PAIRINGS

---



Chalk



Granite



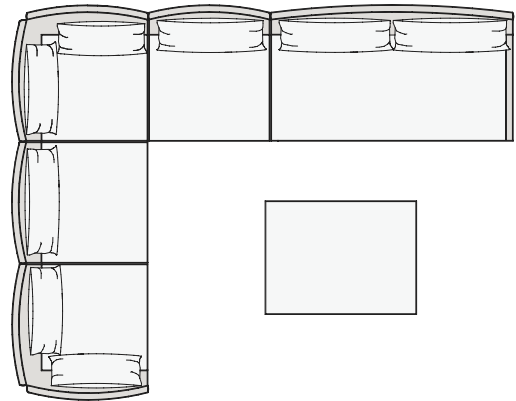
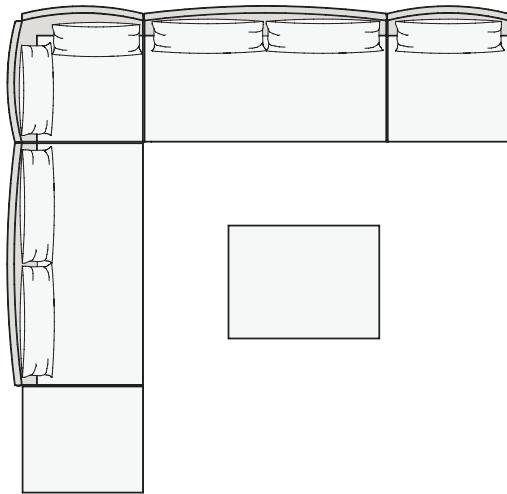
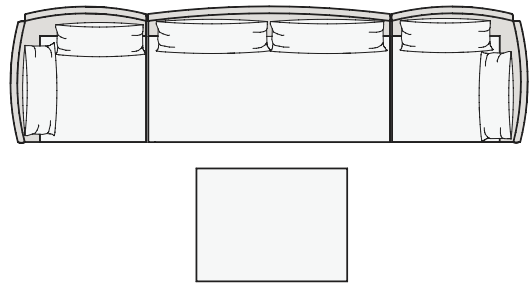
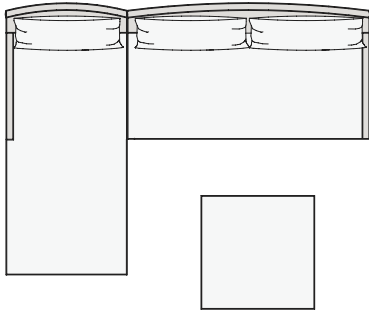
Titanium



Granite

## SAMPLE CONFIGURATIONS

---

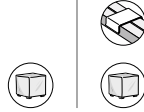


# MODULO

SGD

Lounge Chair

\$2,123 \$2,158

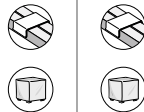


Corner Module



Left Module

\$2,848 \$2,848

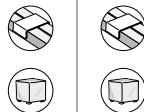


Right Module



Centre Module S

\$1,700 \$2,002

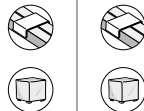


Centre Module M



Centre Module L

\$2,693 \$3,215

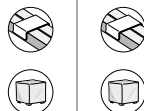
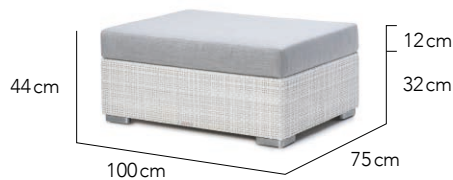


Curved Module

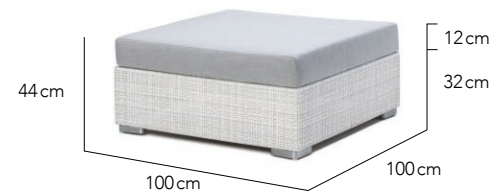


Backless Module / Ottoman S

\$1,160 \$1,412

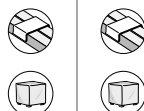
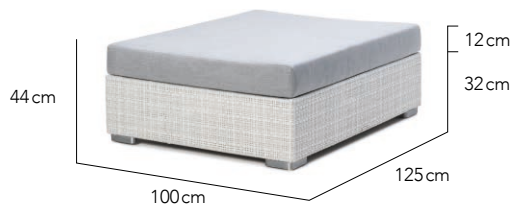


Backless Module / Ottoman M



Backless Module / Ottoman L

\$1,551 \$2,860



Chaise Longue S





# MODULO

SGD

Chaise Longue M

\$3,413 \$4,243

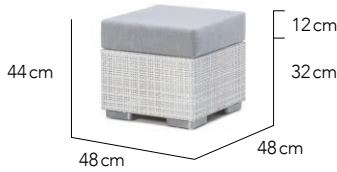


Chaise Longue L

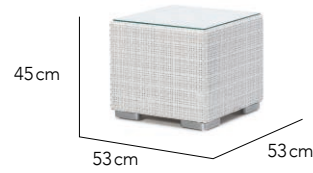


Ottoman / Foot Stool

\$681 \$496  
Glass \$110  
Total \$606

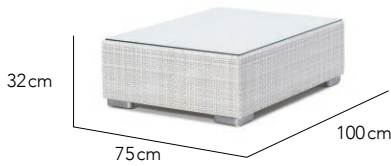


Side Table

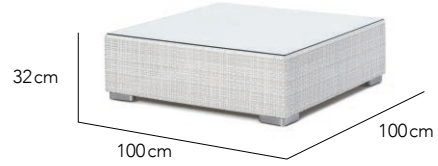


Coffee Table S

\$682 \$853  
Glass \$176  
Total \$858  
Glass \$200  
Total \$1,053

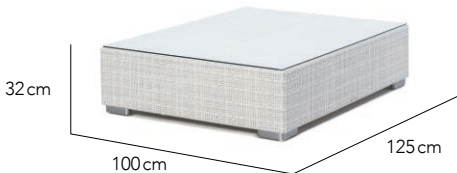


Coffee Table M

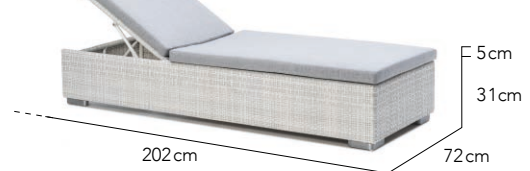


Coffee Table L

\$872 \$1,457  
Glass \$248  
Total \$1,120  
Cushion w Headrest \$670  
Cushion w/o Headrest \$586  
Headrest w Sleeve \$126



Sun Lounger (Cushion Optional)



Sun Lounger

\$1,457 \$3,061  
Cushion w Headrest \$1,340  
Cushion w/o Headrest \$1,172  
Headrest w Sleeve \$251



Sun Lounger Double (Cushion Optional)



Sun Lounger Double

\$3,061



# MODULO

---

## RECOMMENDED FINISHING PAIRINGS

---



Chalk



Granite



Clay



Granite



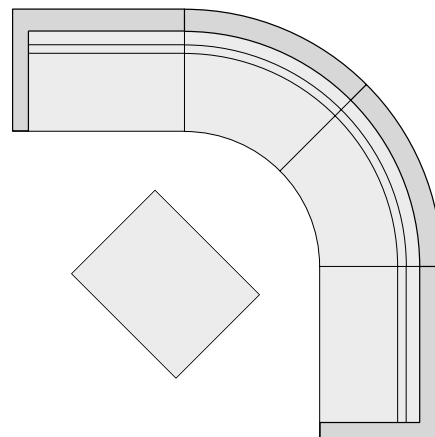
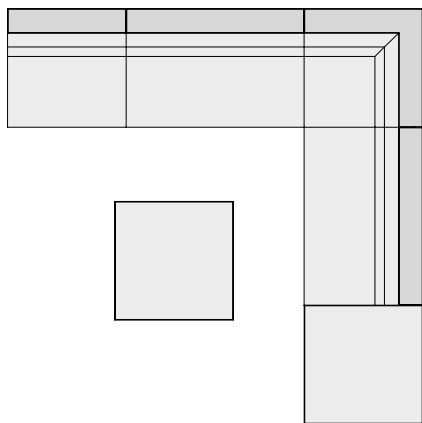
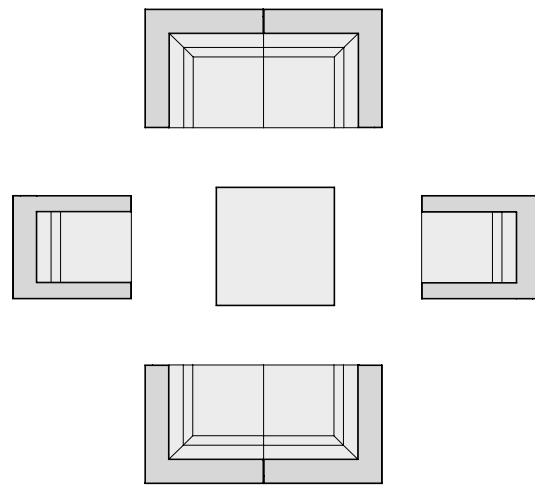
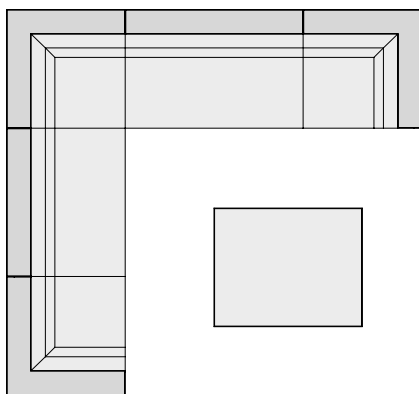
Titanium



Natural

## SAMPLE CONFIGURATIONS

---





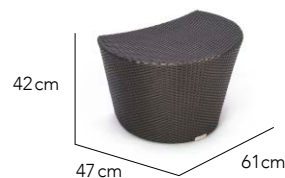
# NEST

SGD

## Day Bed

w/o Canopy \$5,157 \$435  
w Canopy \$6,137

## Half Moon Side Table



## Day Bed (Canopy Down)

w/o Canopy \$5,157  
w Canopy \$6,137



## PREFERRED FINISHING PAIRINGS



Chalk



Granite



Titanium



Granite

## CANOPY



Natural

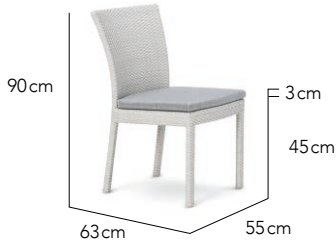


Granite



Taupe

Side Chair



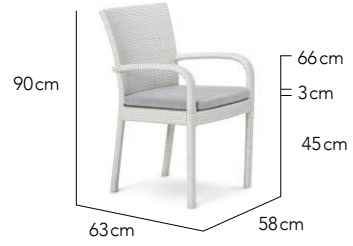
**\$336**  
Cushion \$109  
Total \$445



**\$402**  
Cushion \$117  
Total \$519



Arm Chair



Sun Lounger (Cushion Optional)



**\$1,089**  
Cushion w Headrest \$670  
Cushion w/o Headrest \$586  
Headrest w Sleeve \$126



**\$1,089**



Sun Lounger



Side Table



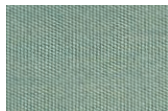
**\$280**



RECOMMENDED FINISHING PAIRINGS



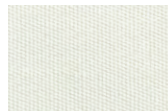
Chalk



Spa



Titanium



Natural

# PALM

SGD

Side Chair



**\$390**  
Cushion **\$129**  
Total **\$519**



Side Chair  
(Non Cushion Version)



Arm Chair



**\$490**  
Cushion **\$137**  
Total **\$627**



Arm Chair  
(Non Cushion Version)



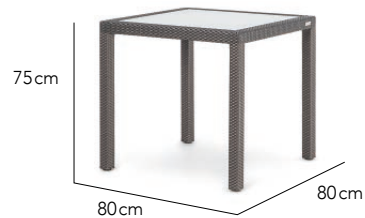
2 Seater Arm Chair



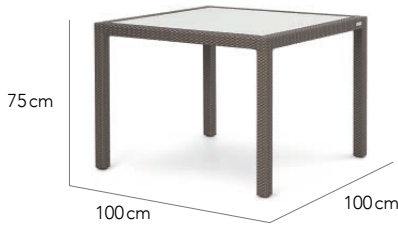
**\$719**  
Cushion **\$247**  
Total **\$966**



Dining Table



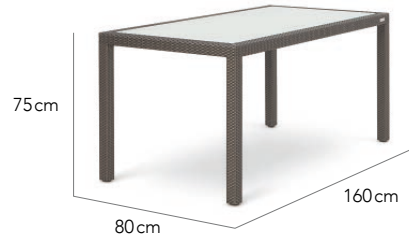
Dining Table



**\$1,050** **\$1,500**



Dining Table



Dining Table



**\$1,842** **\$1,091**



Lounge Chair



2 Seater Sofa



**\$1,596** **\$2,217**



3 Seater Sofa



# PALM

SGD

Corner Module



\$1,371

\$1,603



Left Module



Right Module



\$1,603

\$1,055



Centre Module S



Centre Module L



\$1,499

\$766



Backless Module / Ottoman



Chaise Longue L



\$1,582

\$1,582



Chaise Longue R



Foot Stool



\$764

\$446



Side Table



Coffee Table



\$699

\$783



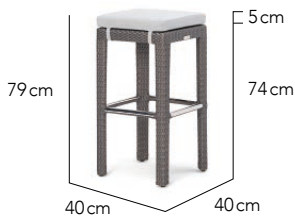
Coffee Table



# PALM

SGD

Bar Stool



\$528  
Cushion \$129  
Total \$657



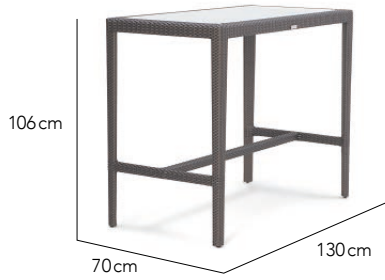
\$499  
Cushion \$129  
Total \$628



Bar Chair



Bar Table



\$1,149



\$1,089

Cushion w Headrest \$670  
Cushion w/o Headrest \$586  
Headrest w Sleeve \$126



Sun Lounger  
(Cushion Optional)



Sun Lounger



\$1,089



\$2,526

Cushion w Headrest \$1,340  
Cushion w/o Headrest \$1,172  
Headrest w Sleeve \$251



Sun Lounger Double  
(Cushion Optional)



Sun Lounger Double



\$2,526



\$243



Sun Lounger Side Table



## RECOMMENDED FINISHING PAIRINGS



Chalk



Granite



Bronze



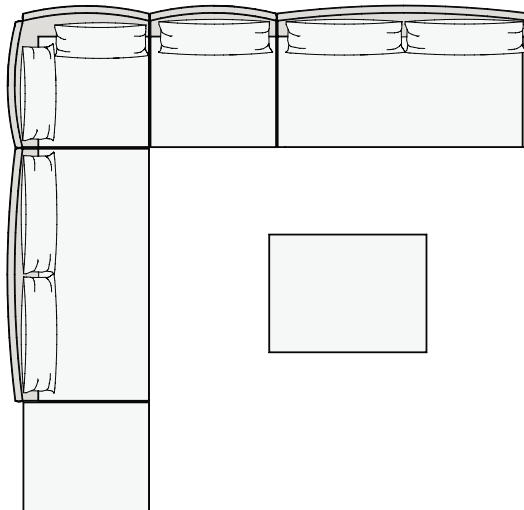
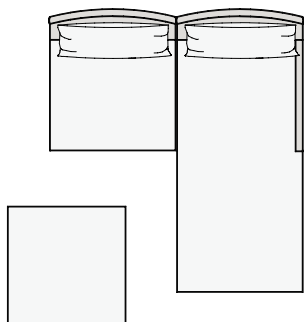
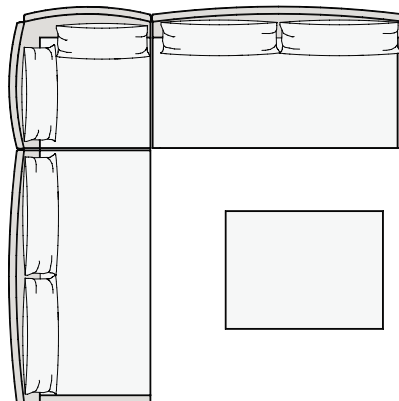
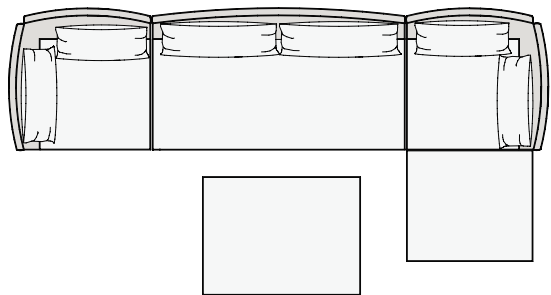
Granite

# PALM

---

## SAMPLE CONFIGURATIONS

---

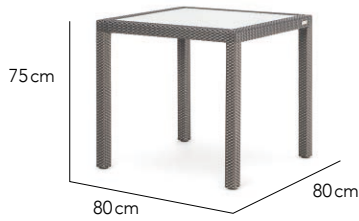




# PARTU

SGD  
 GI = FROSTED GLASS INSERT  
 FW = FULLY WOVEN TOP  
 GLASS = CLEAR GLASS FOR FW TOP

Dining Table



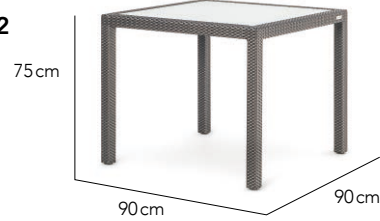
GI \$841  
 FW \$684  
 Glass \$163



GI \$951  
 FW \$696  
 Glass \$182



Dining Table



Dining Table



GI \$1,050  
 FW \$760  
 Glass \$200



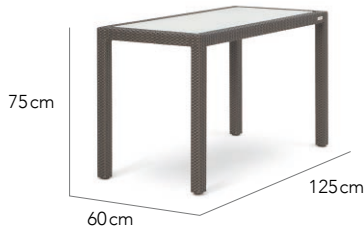
GI \$1,129  
 FW \$767  
 Glass \$184



Dining Table



Dining Table



GI \$1,211  
 FW \$864  
 Glass \$183



GI \$1,500  
 FW \$1,133  
 Glass \$252



Dining Table



Dining Table



GI \$1,731  
 FW \$1,215  
 Glass \$384



GI \$1,842  
 FW \$1,258  
 Glass \$421



Dining Table



Dining Table



GI \$2,027  
 FW \$1,398  
 Glass \$457



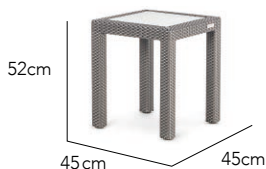
GI \$2,944  
 FW \$2,050  
 Glass \$613



Dining Table



Side Table



GI \$438  
 FW \$371  
 Glass \$77



GI \$693  
 FW \$510  
 Glass \$158



Coffee Table



# PARTU

SGD  
 GI = FROSTED GLASS INSERT  
 FW = FULLY WOVEN TOP  
 GLASS = CLEAR GLASS FOR FW TOP

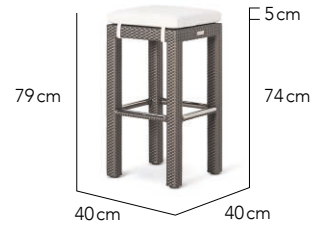
Coffee Table



GI \$834 \$598  
 FW \$589 Cushion \$129  
 Glass \$176 Total \$727

- 
- 
- 

Bar Stool



Bar Table



GI \$1,058 GI \$1,161  
 FW \$680 FW \$812  
 Glass \$147 Glass \$163

- 
- 
- 

Bar Table



Bar Table



GI \$1,072 GI \$1,791  
 FW \$795 FW \$1,203  
 Glass \$163 Glass \$252

- 
- 
- 

Bar Table



## FIBRE

7mm '1x1' Weave



Chalk



Sand



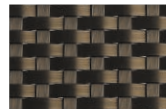
Natural



Java



Bronze



Brass



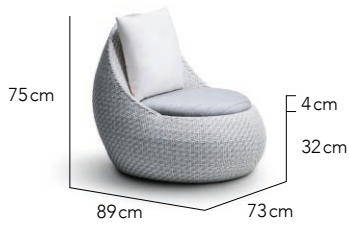
Titanium



Carbon

Lounge Chair

\$1,270 \$3,221



Day Bed S



Day Bed L

\$4,356 \$702

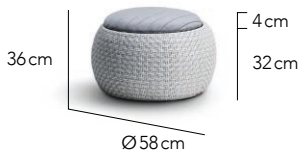


Stool

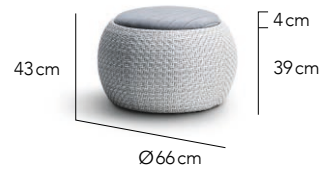


Ottoman S

\$750 \$966

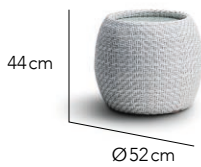


Ottoman L

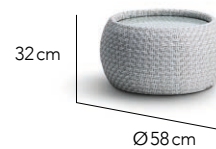


Side Table

\$552 \$592  
Glass \$59 Glass \$76  
Total \$611 Total \$668

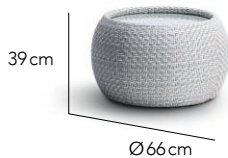


Coffee Table S



Coffee Table L

\$765  
Glass \$87  
Total \$852



## RECOMMENDED FINISHING PAIRING



Chalk



Granite

# SUMMER LIGHT

SGD

Lounge Chair

\$1,255 \$1,958



2 Seater Sofa



3 Seater Sofa

\$2,683 \$1,551

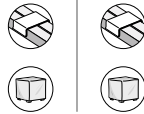


Corner Module



Left Module

\$1,862 \$1,862

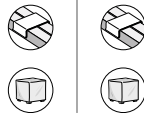


Right Module



Centre Module S

\$1,185 \$1,722

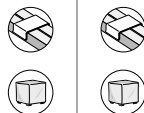


Centre Module L



Backless Module S / Ottoman

\$857 \$1,114

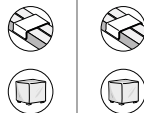


Backless Module L



Chaise Longue L

\$2,425 \$2,425



Chaise Longue R



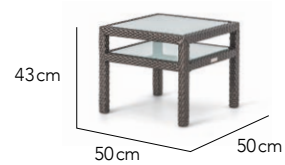
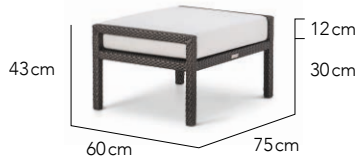
# SUMMER LIGHT

SGD

Foot Stool

\$827 | \$763

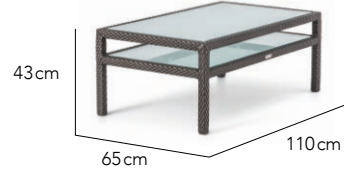
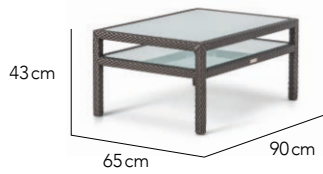
Side Table



Coffee Table

\$1,036 | \$1,207

Coffee Table



## RECOMMENDED FINISHING PAIRINGS



Chalk



Granite

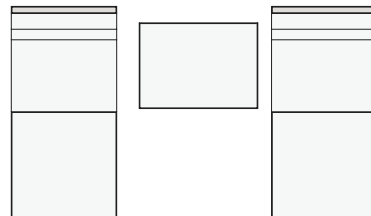
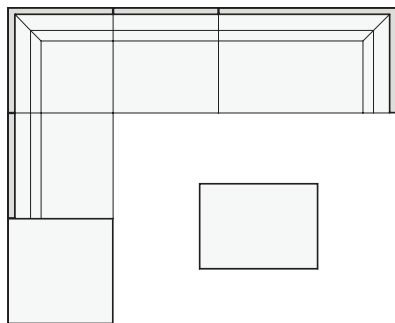
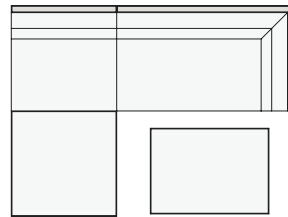
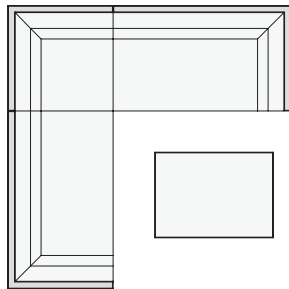


Bronze



Natural

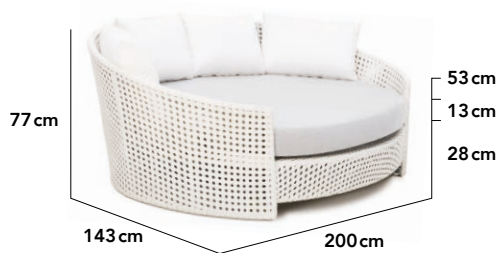
## SAMPLE CONFIGURATIONS



# TAMARU

SGD

Day Bed



\$4,020

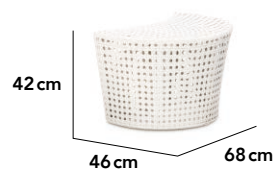
\$401

Glass \$109

Total \$510



Half Moon Side Table



## RECOMMENDED FINISHING PAIRINGS



Chalk



Granite



Natural



Natural



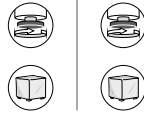
# TRES

SGD

Dining Table



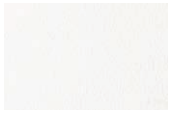
\$2,906 \$4,792



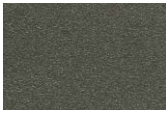
Dining Table



## POWDER COATINGS



White



Taupe



Asteroid

# WAVE

SGD

## Sun Lounger (Cushion Optional)

\$1,005

\$1,005

## Sun Lounger

Cushion w Headrest \$670  
 Cushion w/o Headrest \$586  
 Headrest w Sleeve \$126



## Sun Lounger Side Table

\$262



## RECOMMENDED FINISHING PAIRINGS



Chalk



Granite



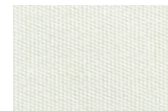
Natural



Taupe

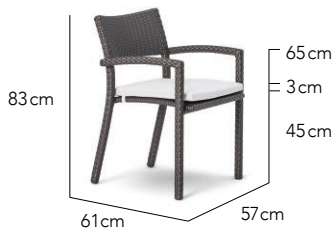


Bronze



Natural

## Arm Chair



**\$377**  
Cushion \$117  
Total \$494



**\$638**  
Cushion \$211  
Total \$849



## 2 Seater Arm Chair



## Club Chair



**\$482**  
Cushion \$155  
Total \$637



**\$270**  
Glass \$113  
Total \$383



## Club Chair Side Table



## Club Chair Foot Stool / Ottoman



**\$270**  
Cushion \$155  
Total \$425



**\$392**  
Glass \$163  
Total \$555



## Coffee Table



## Coffee Table



**\$449**  
Glass \$188  
Total \$637



**\$458**  
Cushion \$117  
Total \$575



## Bar Arm Chair



## Sun Lounger (Cushion Optional)



**\$1,087**  
Cushion w Headrest \$670  
Cushion w/o Headrest \$586  
Headrest w Sleeve \$126



**\$1,087**



## Sun Lounger



## Sun Lounger Side Table



**\$250**



# ZEN

---

## RECOMMENDED FINISHING PAIRINGS

---



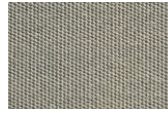
Chalk



Granite



Titanium



Taupe

# SHADEMAKER

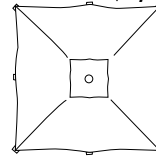
SGD  
PRICES INC BASE

Libra

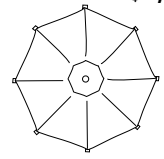


Base 60kg with wheels

2M - \$2,085  
2.5M - \$2,479



Square  
2m | 2.5m



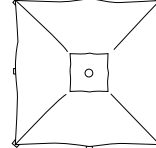
Octagon  
2.5m | 2.7m

Sirius

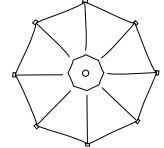


Base 160kg

2.7M - \$5,110  
3M - \$5,362



Square  
2.7m | 3m



3M - \$5,169  
3.5M - \$5,494

Octagon  
3m | 3.5m

## Canopy Colours



Oyster



Taupe



Aquamarine

OTHER MODELS  
AVAILABLE ON  
REQUEST

# TUUCI

SGD

Baymaster  
Classic

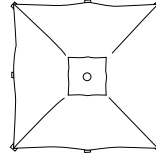


WITH WHEELS \$1,274  
WITHOUT WHEELS \$962



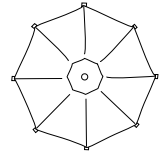
Base 70kg wheels optional

2M \$1,745  
2.25M \$2,047  
2.6M \$2,310



Square  
2m | 2.25m | 2.6m

2.25M \$2,310  
2.75M \$2,379  
3.2M \$2,794



Octagon  
2.25m | 2.75m | 3.2m

Baymaster  
Fibre Flex



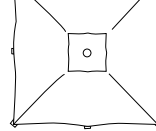
WITH WHEELS \$1,274  
WITHOUT WHEELS \$962



Base 70kg wheels optional

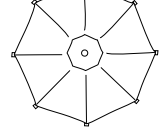
For Windy Environments

1.65M \$1,653  
2M \$1,745  
~~2.25M \$2,047~~



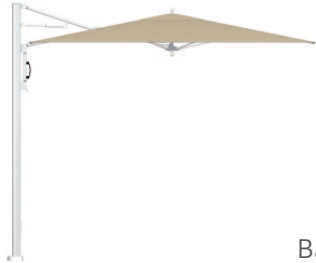
Square  
1.65m | 2m | 2.25m

2.25M \$2,310  
2.75M \$2,379  
3.2M \$2,794



Octagon  
2.25m | 2.75m | 3.2m

Baymaster  
Cantilever

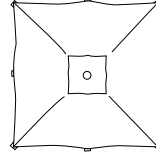


G-PLATE 181KG \$4,042  
G-PLATE 272KG \$5,637  
G-PLATE 363KG \$7,222



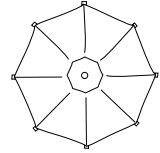
Base 181kg | 272kg | 363kg

2.45M \$7,944  
3M \$9,073



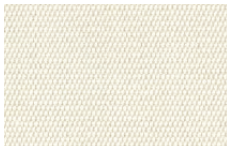
Square  
2.45m | 3m

2.75M \$7,944  
3.4M \$9,073



Octagon  
2.75m | 3.4m

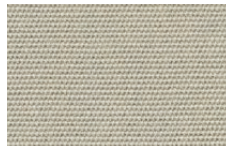
## Canopy Colours



Oyster



Taupe



Cadet Grey



Aspen

OTHER CANOPY  
COLOURS AVAILABLE  
ON REQUEST

OTHER MODELS  
AVAILABLE ON  
REQUEST



# LANTERNS

SGD

Lantern XS

\$454

\$549

Lantern S



Lantern M

\$588

\$631

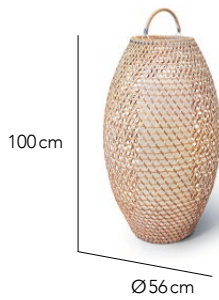
Lantern L



Lantern XL

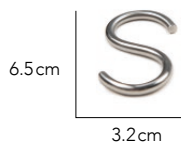
\$913

Outdoor LED Light

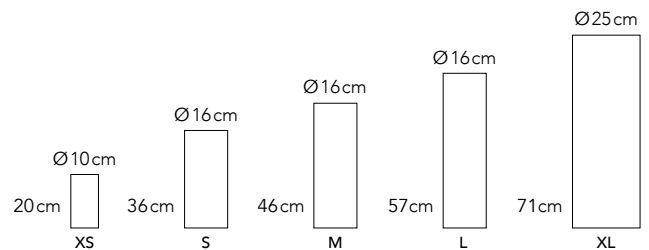


Each lantern comes with a proportional sized LED

'S' Clip



LED Light Sizes



## FINISHING

7mm Hex Weave



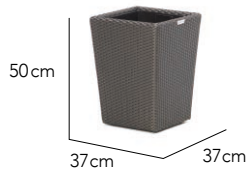
Seashore

# PLANTERS

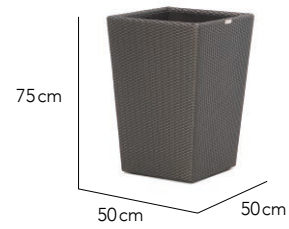
SGD

Planter Tapered S

\$546 \$743

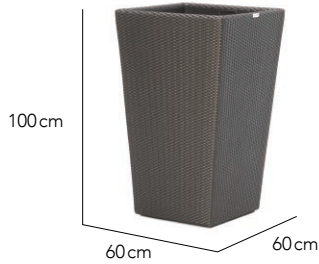


Planter Tapered M

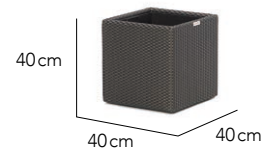


Planter Tapered L

\$999 \$619

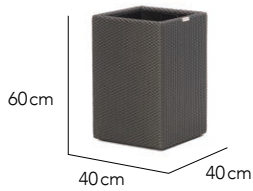


Planter Square S

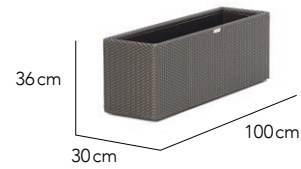


Planter Square M

\$695 \$709



Planter Screen



## PREFERRED FINISHING OPTIONS



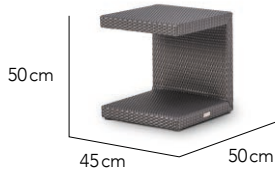
Chalk

Bronze

# SIDE TABLES

SGD

C Table



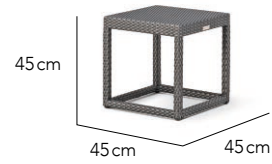
FW \$393  
Glass \$85  
Total \$478



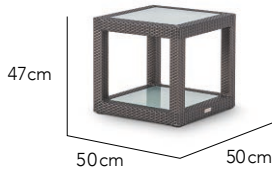
FW \$278  
Glass \$77  
Total \$355



Top Cube



Glass Cube



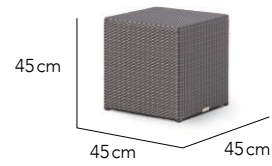
GI \$649



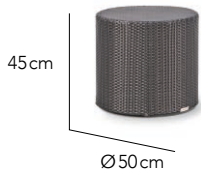
FW \$291  
Glass \$77  
Total \$368



Sea Cube



Sea Circle



FW \$311  
Glass \$88  
Total \$399



## FIBRE

7mm '1x1' Weave



Chalk



Sand



Natural



Java



Bronze



Brass



Titanium



Carbon

# FURNITURE COVERS

---



It's only natural to want to protect your OHMM® outdoor furniture at certain times of the year.

At OHMM® we have developed an outdoor cover solution using a high tech fabric which has special properties.

OHMM® outdoor covers are exceptionally durable, naturally water repellent, UV-resistant (won't fade) with outstanding breathability and mildew resistance.

The covers reduce dampness, heat build up and condensation, helping to prevent mould and mildew from forming on your furniture and cushions during storage.

OHMM® covers feature a hem around the base fitted with marine elastic cord and cord locks for securing them in place. The hem stops 5cm from the ground to allow air circulation to prevent moisture build up inside.

And there is a 5 year warranty against loss of fabric strength or colour loss.

Available in two colour combinations.

Please contact us for a quotation for your OHMM® furniture.

---

Cover Colour



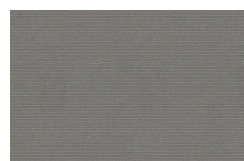
Beige

Piping Colour



Sand

Cover Colour



Charcoal

Piping Colour



Graphite

# ACCENT CUSHIONS

SGD



<p>35cm   14"</p>  <p>35cm   14"</p> <p><b>CAT A \$112</b> <b>CAT B \$136</b> <b>CAT C \$210</b></p>	<p>40cm   16"</p>  <p>40cm   16"</p> <p><b>CAT A \$126</b> <b>CAT B \$151</b> <b>CAT C \$231</b></p>	<p>40cm   16"</p>  <p>60cm   24"</p> <p><b>CAT A \$149</b> <b>CAT B \$179</b> <b>CAT C \$273</b></p>
<p>45cm   18"</p>  <p>45cm   18"</p> <p><b>CAT A \$145</b> <b>CAT B \$173</b> <b>CAT C \$264</b></p>	<p>50cm   20"</p>  <p>40cm   16"</p> <p><b>CAT A \$146</b> <b>CAT B \$174</b> <b>CAT C \$265</b></p>	<p>50cm   20"</p>  <p>50cm   20"</p> <p><b>CAT A \$158</b> <b>CAT B \$189</b> <b>CAT C \$290</b></p>

OTHER SIZES AVAILABLE ON REQUEST

## ACCENT CUSHIONS

Discerningly handmade for that softness and ultimate comfort, OHMM® Accent Cushions are available in a range of heights and widths to create visually interesting layering and support.



# ACCENT CUSHIONS

---

## CATEGORY A | SOLIDS



Natural



Bird's Eye



Taupe



Granite



Charcoal



Coal



Spa



Aruba



Macaw



Capri



Buttercup



Tuscan



Mimosa



Lichen



Pumpkin



Paprika



Riviera



Adriatic

## CATEGORY B | TEXTURES



Salt



Yellow



Orange



Bamboo



Ocean

## CATEGORY C | PATTERNS



Oasis Capri



Rainforest



Avacado



Lagoon



# FIBRE & POWDER COATINGS

OHMM® has teamed up with Rehau® - the most recognised and trusted name worldwide in polymer technology for over fifty years. Raucord synthetic rattan is manufactured using renowned German engineering know how and production technology.

Due to its superior characteristics, Raucord fibre offers a carefree outdoor experience.

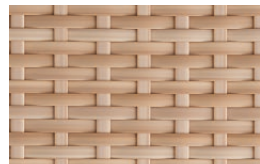
UV-resistant | Weatherproof | Temperature Resistant | Strong & Durable | Low Maintenance | Easy to Clean | Non-toxic | Environmentally Friendly | Colourfast | Scratch & Stain Resistant

## 7MM '1X1' WEAVE

BARCELONA  
BEACH  
CABANA  
CATALONIA  
CIRCULO  
CLASSIC  
CLOUD 9  
ECLIPSE  
FLO  
INTI  
LINEAR  
MAXIMUS  
NEST  
NOVO  
PALM  
PARTU  
PLANTERS  
SIDE TABLES  
SUMMER LIGHT  
WAVE  
ZEN



Chalk



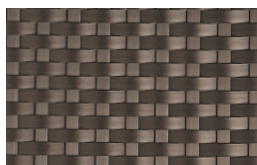
Sand



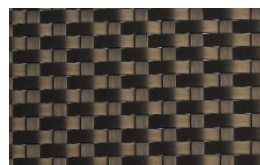
Natural



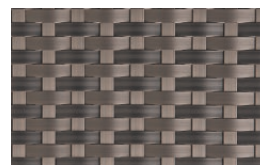
Java



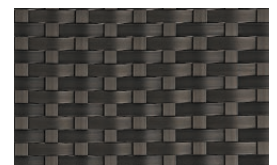
Bronze



Brass



Titanium



Carbon

---

### 6MM HERRINGBONE WEAVE

FIESTA



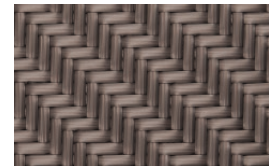
Chalk



Sand



Java



Bronze

---

### 7MM HERRINGBONE '2X2' WEAVE

CALA  
CALA MINI  
HORIZON  
HORIZON MINI  
KEYWEST  
KYOTO  
SOL



Chalk



Sand



Java



Titanium

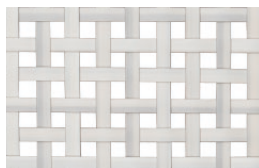


OTHER FIBRE COLOURS AVAILABLE ON REQUEST

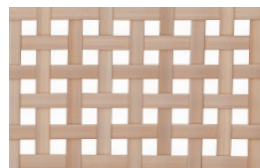
---

### 7MM OPEN WEAVE

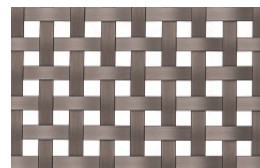
BEACH  
FLO  
NOVO  
ZEN



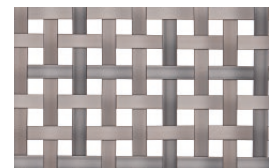
Chalk



Natural



Bronze



Titanium

---

### 13 X 7MM '321' WEAVE

 NEW WEAVING STYLE

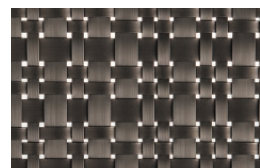
MODULO



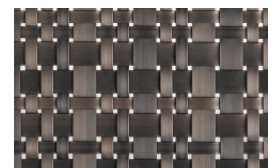
Chalk



Clay



Bronze



Titanium

---

### 7MM CANING WEAVE

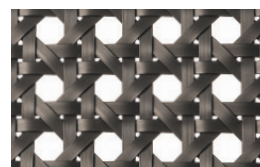
TAMARU



Chalk



Natural



Bronze

---

**13MM CANING WEAVE** 

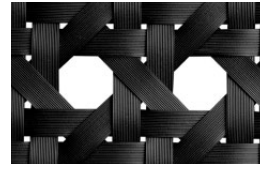
HALF MOON



Chalk



Natural



Carbon

---

**7MM DIAMOND WEAVE** 

HAVANA



Chalk



Sand



Titanium

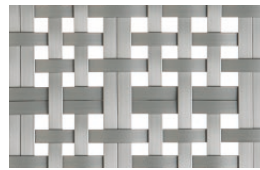
---

**7MM '321' WEAVE**  **NEW WEAVING STYLE**

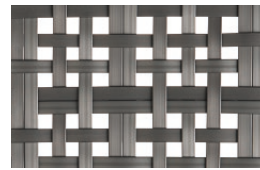
LATITUDES



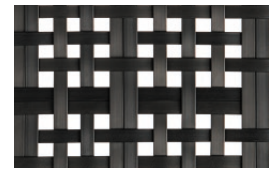
Chalk



Silver



Platinum



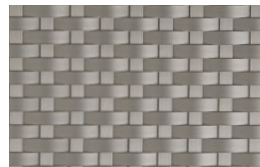
Carbon

---

**7MM '1X1' WEAVE** 



Chalk



Silver



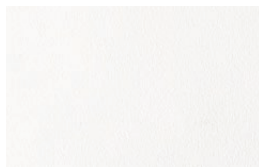
Platinum



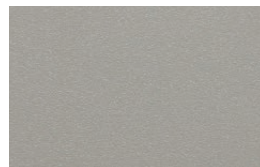
Carbon

---

**POWDER COAT PAIRINGS**



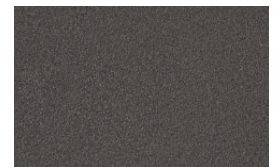
White



Silver



Taupe

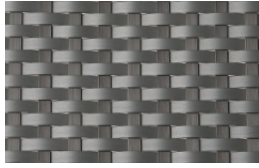


Asteroid

---

MANTRA

7MM '1X1' WEAVE 



Platinum & Silver

POWDER COAT PAIRING

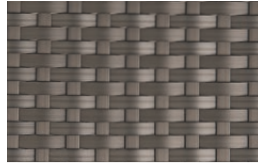


Asteroid

7MM '1X1' WEAVE 



Chalk

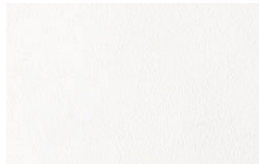


Platinum



Carbon

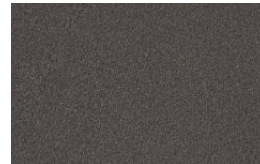
POWDER COAT PAIRINGS



White



Taupe

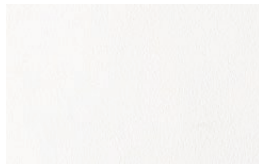


Asteroid

---

TRES

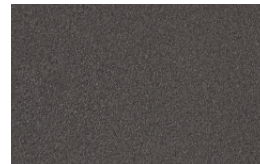
POWDER COATINGS



White



Taupe



Asteroid

---

LANTERNS

7MM HEX WEAVE 



Seashore

# CUSHIONS

Working with artisanal sofa makers and foam manufacturers, OHMM® cushions are expertly designed for support, comfort and durability using the latest material technology.

We use high density foam cores to ensure lasting performance, covered with Dacron® polyester fibre for comfort and good looks, then lined with replaceable water resistant spunbond material, and finally covered with Sunbrella® fabric.

We stitch using high quality German polyester threads and use robust nylon zippers and runners to ensure durability and fuss free usage.

# FABRICS

Only the best. Sunbrella®. The most recognised and trusted name worldwide in outdoor fabrics for over fifty years - it all adds up to unparalleled performance and good looks.

Colourfast | Fade Resistant | Durable | Water Repellent | Stain Resistant | Mould Resistant | Luxurious Touch | Breathable | Environmentally Friendly | Easy Care

OHMM® Design Studio has carefully curated a colour palette of Sunbrella® fabrics giving you the freedom to play with colours and textures to style it your way and create a unique and inspiring ensemble.



# FABRIC COLOURS

## RECOMMENDED FOR SEAT & BACK CUSHIONS



Natural



Bird's Eye



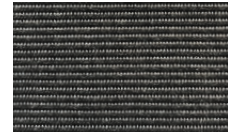
Taupe



Granite

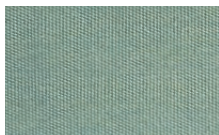


Charcoal



Coal

## RECOMMENDED FOR ACCENTS CATEGORY A | SOLIDS



Spa



Aruba



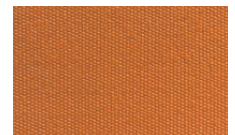
Macaw



Capri



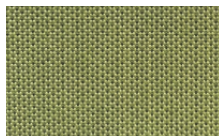
Buttercup



Tuscan



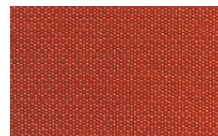
Mimosa



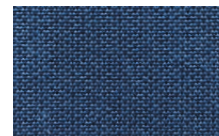
Lichen



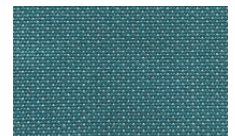
Pumpkin



Paprika



Riviera



Adriatic

## CATEGORY B | TEXTURES



Salt



Yellow



Orange

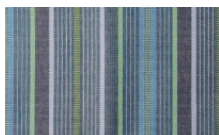


Bamboo



Ocean

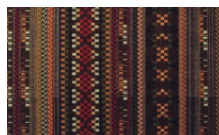
## CATEGORY C | PATTERNS



Oasis Capri



Rainforest



Avacado



Lagoon

\* Full Sunbrella® range available on request basis for projects

\* Client's own material welcome



---

# TABLE TOP SPECIFICATIONS



Fibre Fully Woven

Fully woven top. No glass.



Fibre & Clear Glass

Clear tempered glass. 6mm thickness. Edges chamfered. Corners rounded. Set in 10mm from the edge of the table for better looks and comfort. Glass anchors to keep glass secure and raised slightly above fibre. Removable.



Frosted Glass Insert

Frosted tempered glass. 8mm thickness on tables up to 180x100cm. 10mm thickness on tables larger than 180x100cm. Edges chamfered. Corners rounded. Fitted flush to top of woven border. Adjustable glass supports for minor adjustment. Removable.



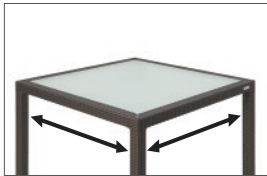
Teak Slats

Premium teak slats sourced from sustainable plantations. 10mm thickness on coffee and side tables. 12mm on dining tables. Edges chamfered and corners slightly rounded for comfort. Coated with high quality clear matt marine varnish to create and maintain a premium looking finish, eliminate maintenance as well as no staining and easy clean up.

# ICONS & OPTIONAL DESIGN FEATURES



CUSTOM SIZING



Tables



OPTIONAL CUSHION STRAPS



Chairs & Stools



PROTECTIVE FOOTRESTS



Bar Stools & Chairs



ADJUSTABLE GLIDERS



Tables



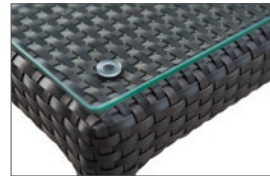
CLIPS



Modular Items



GLASS ANCHORS



Tables



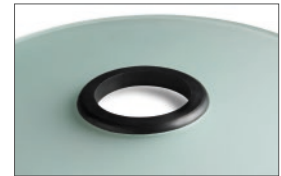
PROTECTIVE FERRULES



Chairs & Tables



OPTIONAL PARASOL HOLE



Tables



OPTIONAL WHEELS



Sun Loungers



OPTIONAL SUN LOUNGER HEADRESTS



Optional with or without cushion



OPTIONAL COVERS



All Products



SUN LOUNGER ADJUSTABLE BACKRESTS



Snooze



Dream



Chill



Read

# HANDCRAFTED QUALITY

## WAY OF LIFE

In the same way as fibre is hand woven onto our frames, a quality ethos is woven through our company culture. It's how we go about our everyday lives. How we treat our customers, look after our people, how we conduct ourselves and ultimately our quality of life and impact on the planet.

We only use the best quality materials we can find. And yes, something that is designed to last must have been made using the very best materials. No cutting corners. It's what we touch and feel.

## BEST MATERIALS

## ENDURING DESIGNS

But quality means more to us than just the materials alone. Quality is also about design. Designs that are enduring and timeless so customers won't grow tired of them but come to cherish them. No trendy designs that are designed for a season and afterwards fall out of fashion and get discarded.

And to make world class quality products, we need world class craftsmen. That's why we have based OHMM® Manufacturing on the island of Cebu, home to the world's best woven craftsmen.

## IN-HOUSE WORLD CLASS CRAFTSMANSHIP

## OBSESSIVE OVER QUALITY

During our ten year journey, by making our products day in day out, we've built up a tremendous amount of expertise. We've become obsessive over quality, because we know that the quality of our product is our best advertising.

Good for our customers. Good for us.  
Good for Mother Earth too.

## MAKES SENSE

# NOT CONVINCED?

## MORE REASONS TO CHOOSE OHMM

### WORLD CLASS QUALITY

We own our manufacturing facility where we meticulously manage and quality control every step of the production process. This means you are buying a product that is lovingly handcrafted in-house with care and pride. We only use premium materials. Combine this with the world's best woven furniture craftsmen in the Philippines and we believe you have a product that is simply world class.

### DESIGN & CUSTOMISATION

We have a simple philosophy - that great design gives us pleasure and improves the quality of our lives through products that work well, are affordable and look beautiful. Furthermore, we offer an unprecedented choice of fibre and fabric options - so you have the freedom to customise your OHMM® furniture as you want it.

### DURABILITY & LOW MAINTENANCE

Outdoor furniture has to withstand some very rough treatment and our quality of build is second to none. And OHMM® woven products are low maintenance and easy to clean which all adds up to giving you many years of carefree performance.

### SUSTAINABILITY & NO FALSE ECONOMY

We recycle all we can and our products are toxin free, but we firmly believe the biggest sustainability factor is that OHMM® products will last years with proper care. Investing a little more in quality products simply makes good sense - so you save money in the long run.

### WARRANTY

We stand behind our products with a 5 Year Residential Warranty and a 3 Year Project Warranty. So that's peace of mind for you. See our website for full details.

### TRACK RECORD

Prestigious establishments and private individuals have selected OHMM® products around the world for over 10 years. It's very rewarding that many of our orders come from repeat clients. There is no leap of faith with OHMM®.

Need we say more? Contact us today.



